

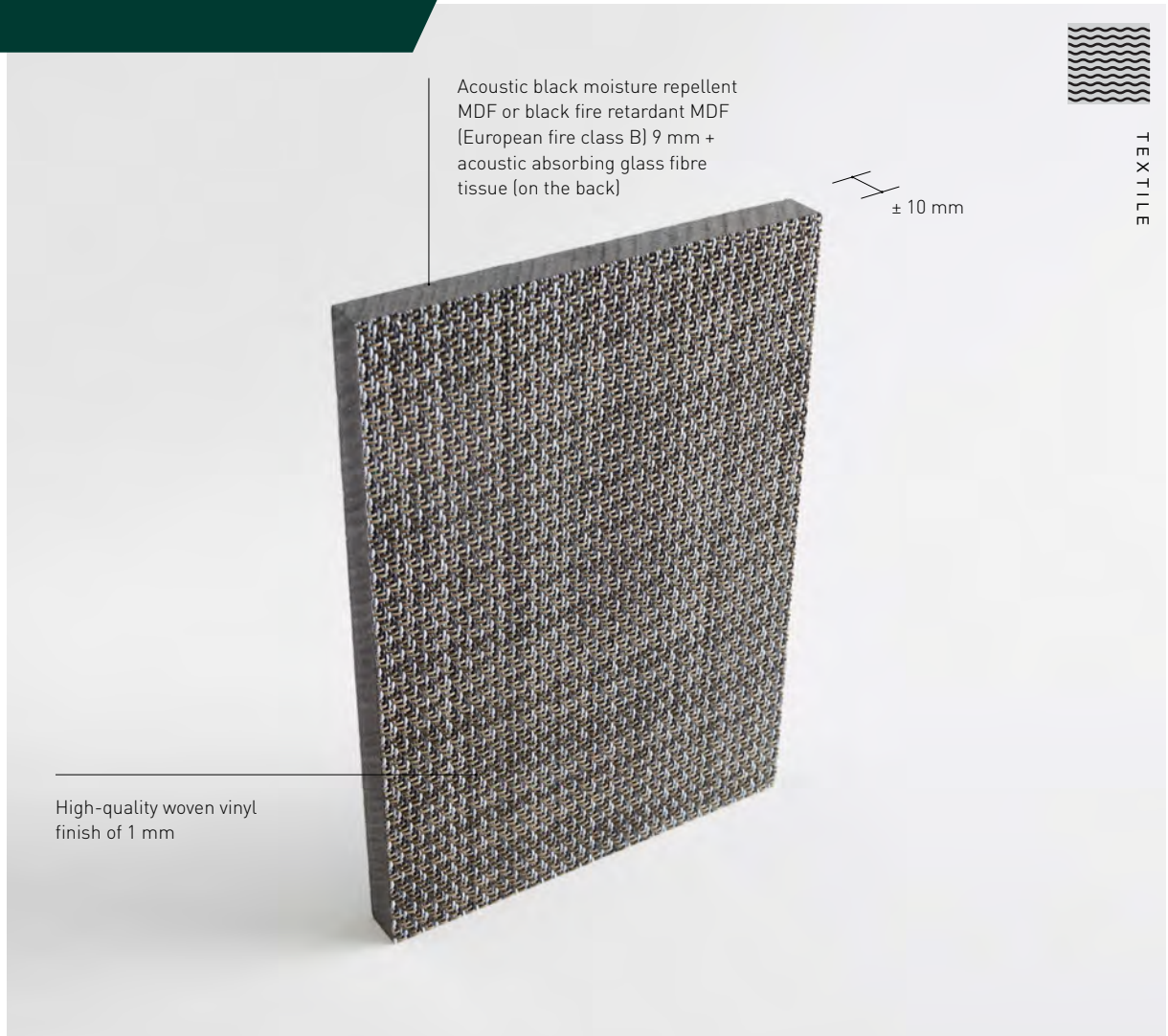
tripla 
coustics

YOUR SILENT PARTNER

TECHNICAL DATA SHEET

type I

wall-ceiling



type I wall-ceiling

MATERIAL COMPOSITION

Top layer High-quality woven vinyl finish 1 mm
 Core Acoustic black moisture repellent MDF 9 mm
 Backing Acoustic absorbing glass fibre tissue

WEIGHT 6,0 kg/m²

PERFORATION

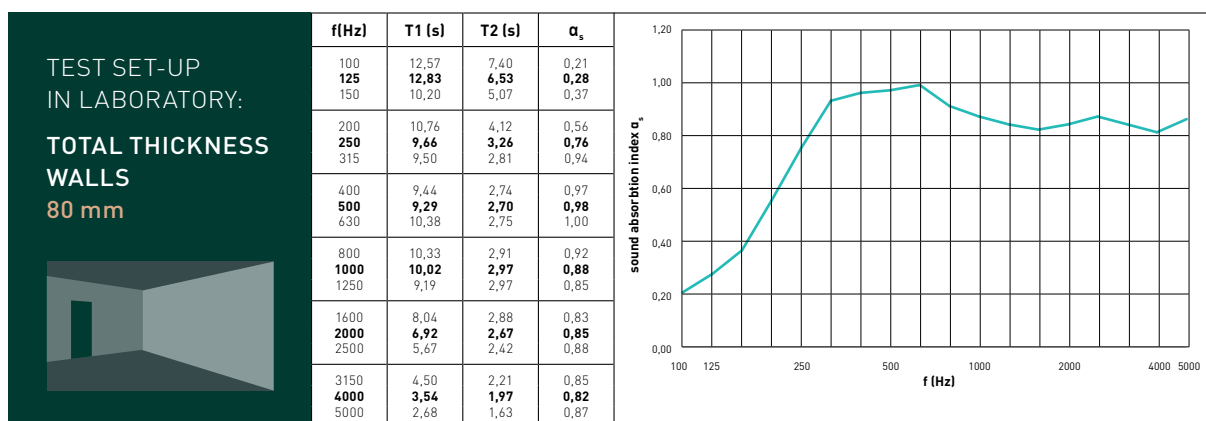
Type I invisible perforation pattern combined with drilled holes 44.2% in the acoustic core.

STD. MEAS. FULL PANEL

(square-sawn)
 3030x640x10 mm (Woven vinyl)

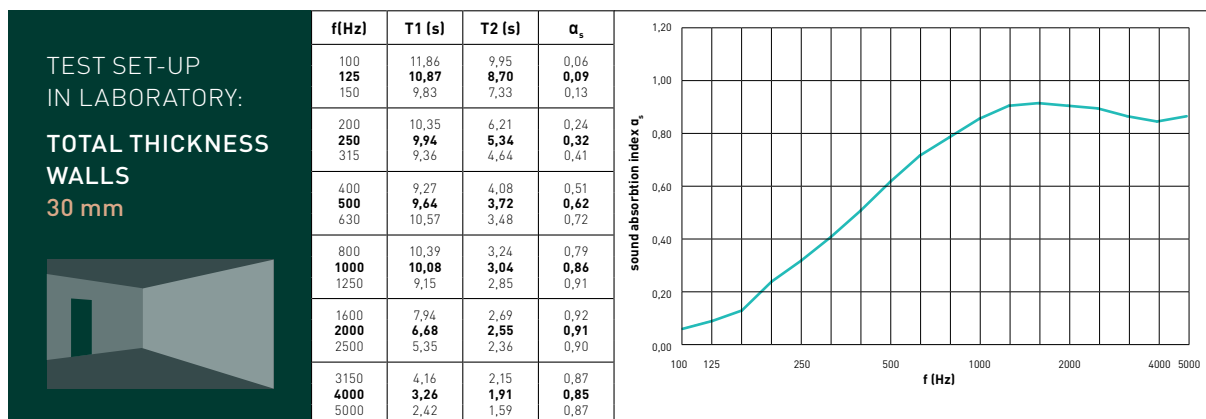
OPTIONS

Made-to-measure on request
 Cupboard door fronts on request (see page 5)
 Cladding panel on request
 Curved wall application radius > 0,30m:
 Is Flex soft PET core:
 final thickness 14mm



f(Hz)	α_p
125	0,30
250	0,75
500	1,00
1000	0,90
2000	0,85
4000	0,85

Total thickness	% perfo	α_w	f(Hz)	Sound class	NRC	SAA
80mm		0,90		A	0,85	0,87
Installation	Mounted on a wooden frame with a thickness of 70mm, filled with 50mm of mineral wool with a density of 40kg/m ³ .					
Values according to reverberation room test EN ISO 354:2003 - EN ISO 11654:1997						



f(Hz)	α_p
125	0,10
250	0,30
500	0,60
1000	0,85
2000	0,90
4000	0,85

Total thickness	% perfo	α_w	f(Hz)	Sound class	NRC	SAA
30mm		0,60	MHH	C	0,70	0,68
Installation	Mounted on a wooden frame with a thickness of 20 mm, filled with 20 mm PRIMAWOOL of 22,5 kg/m ³ .					
Values according to reverberation room test EN ISO 354:2003 - EN ISO 11654:1997						

installation textile / full panels & planks

Fastening on single or double spaced wooden battening (spacing of maximum 600mm is recommended) with pins/nails of the Type Senco Triplacoustics (ral 9005) in the full rear MDF edge of the panel using a gauge 18 mounting gun. Pin head finds its way into the woven vinyl Top layer and is not visible.

In the openings of the framework, a sound-absorbing material (e.g. rock wool or Primawool) should be placed.

For impact-sensitive areas, we recommend longitudinal joints of 2 boards on a common battens behind with an intermediate joint of 2 to 3 mm.

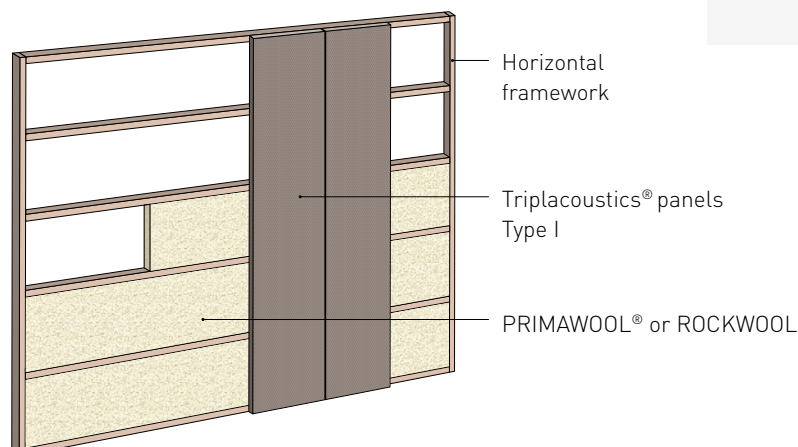
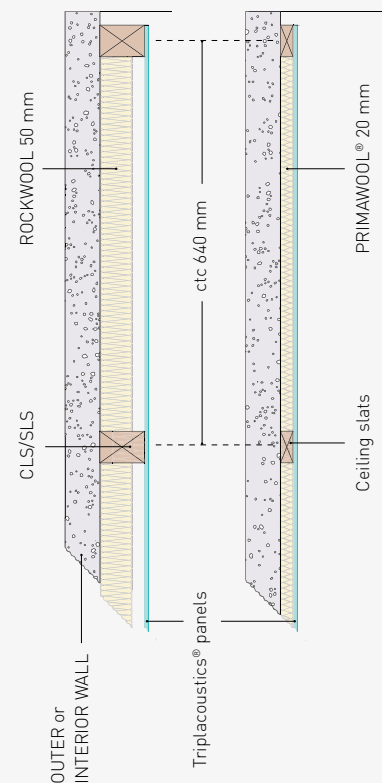
End connections of 2 panels are mounted on a common underlying batten with an intermediate joint of 2 to 3 mm.

We recommend working with a clearance of at least 1 mm per running metre to allow for possible expansion; and this over the total height and/or width of the wall.

TEST SET-UP IN LABORATORY:

TOTAL THICKNESS WALLS
80 mm

TOTAL THICKNESS WALLS
30 mm

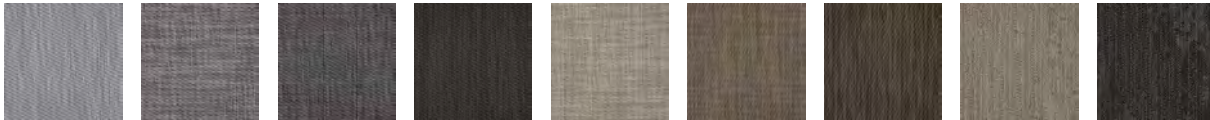
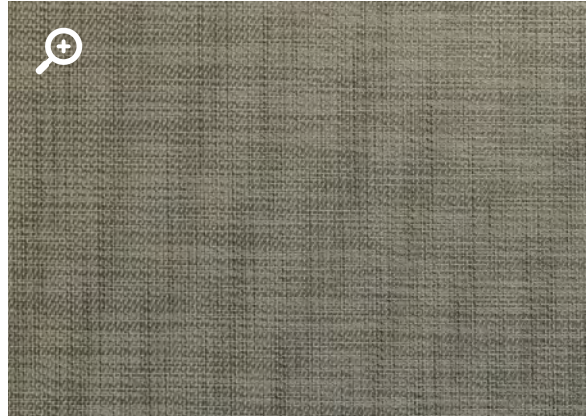


finishes

woven vinyl

This unique top layer for our TYPE I panels consists of woven vinyl. A glass fibre core is coextruded with a bicolour PVC coating.

A fabric is woven using screen weaving technology. The resulting fabric is extremely dense and still breathable.



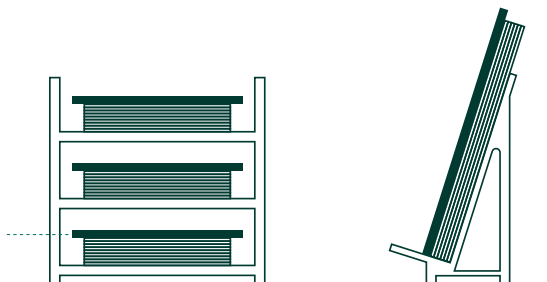
storage and handling of finished panels

The acoustic panels/planks can be mounted horizontally and vertically. For conditioning, we recommend to store the panels in the room at least 48 hours before mounting them. These panels are by nature and composition only to be mounted in a well-conditioned room with a relative humidity between 35 and 55 % and a temperature between 14 and 30 °C. Large temperature and humidity differences between front and plenum are not allowed.

Flat storage with larger cover plate

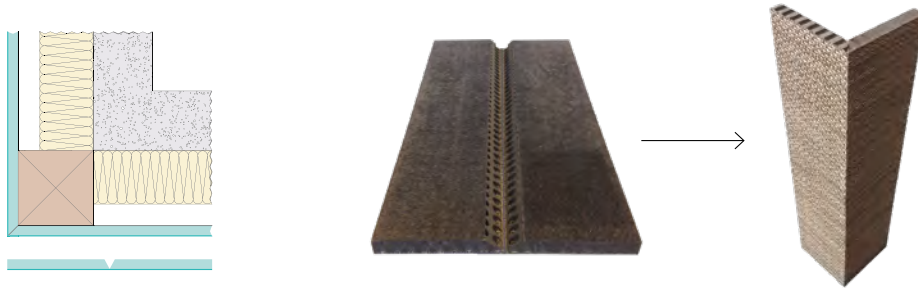
Handle with care (delicate panels)

Larger cover plate than the Triplacoustics® panels.

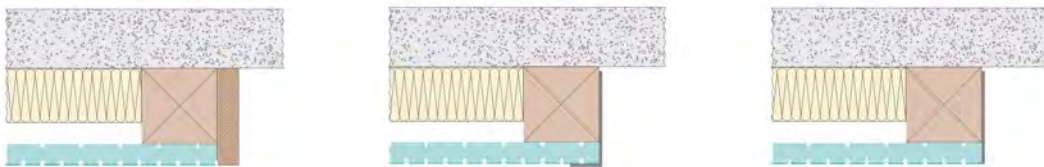


inspiration corner + plinths

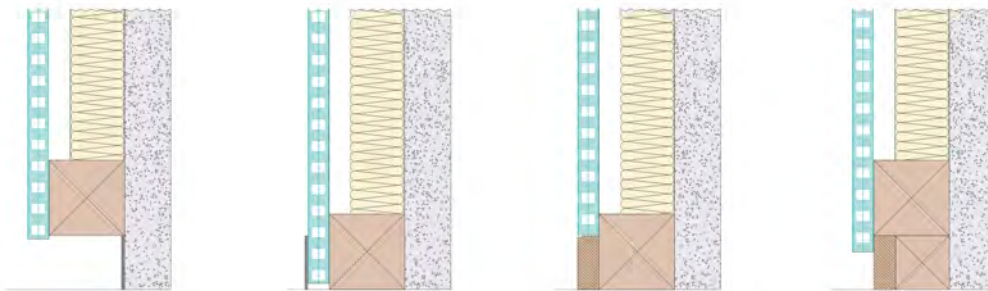
Corner solution type I



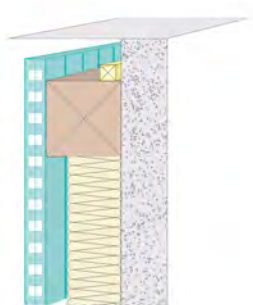
Wall connections



Floor connections



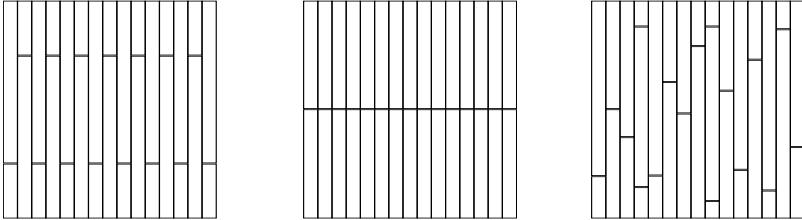
Ceiling LED line



- Primawool or rockwool
- Triplacoustics panel
- wooden structure
- wall
- profile available at specialist shop
- decorative full panel material or massive wood
- LED line

installation patterns

There are different possible installation patterns for panels and planks.
A couple of examples of patterns with planks are given in the drawings below.



Primawool®

Description

- > Low density absorber
- > 100% polyester fibre
- > 1-sided drum membrane: white
- > Colour of polyester fibre: white
- > Applications: walls, ceilings and baffle filling

Features

- > 100 % recyclable PET
- > Inodorous
- > No emission of volatile organic compounds (VOCs) (A+ level)
- > Moisture and rot resistant
- > Non irritating for skin and eyes
- > European fire class B-s2-d0

Figures

Density ISO 9073-1

Thickness E0 (without load) ISO 9073-2

Thickness E1 (load of 50g/50cm²)

Thickness E10 (load of 500g/500cm²)

Inflammability FMVSS 302

Dimensions of roll (length / width / width tolerances)

Package

450 gr/m²

22 mm (measured without package)

21 mm (measured without package)

13 mm (measured without package)

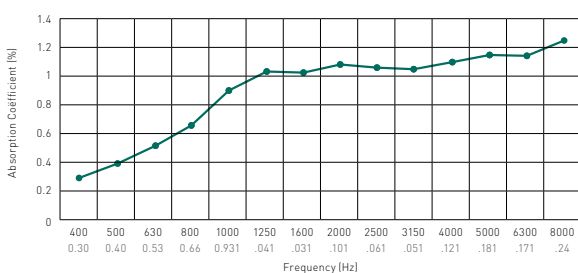
<100 mm/min (self-extinguishing)

30 m / 600 mm / -0 +2 cm

36 m² (2 separate rolls of 30 m)

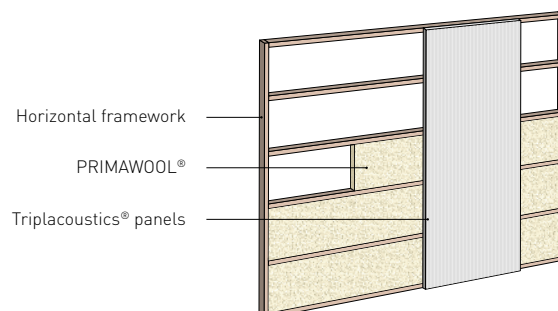
Acoustic features

Absorption coefficient is determined by measuring a sample of PRIMAWOOL® in the reverberation room.



Installation PRIMAWOOL®

Installation in a framework with vertical or horizontal slats.



made-to-measure solutions



Acou Sliding door elements

Triplacoustics can produce Made To Measurement acoustic absorbing cupboard door elements with straight top-running and bottom guiding system. Both sides of the door elements are Type Db, Dr, Dw, I, M, N and the core has a full frame filled with Primawool.

Total Thickness $\pm 60\text{mm}$

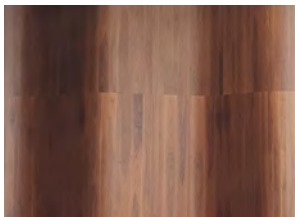


Cladding panels for interior doors (non acou)

We can deliver 'false' acou panels for cladding of an interior door.

This to preserve the esthetics of the project. These panels are delivered full oversize and are to be glued on an existing door.

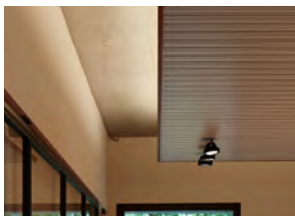
extra thickness $\pm 11\text{mm}$



Curved walls & ceilings

Our acoustic panels can be installed in various ways on a curved back structure. Which producten and which radii are possible can be found in the overview in our catalog on pages 76 and 77.

catalog



Akoest-object

You can also opt for acoustic baffles to absorb the sound in a room.

These baffles are available as individual wall or ceiling elements.

They can be made to measure on the basis of all our types.



Akoest-lambris

All walls/ceilings are available in woodpanelling non acou on request

> 0% Perforation (no absorption)

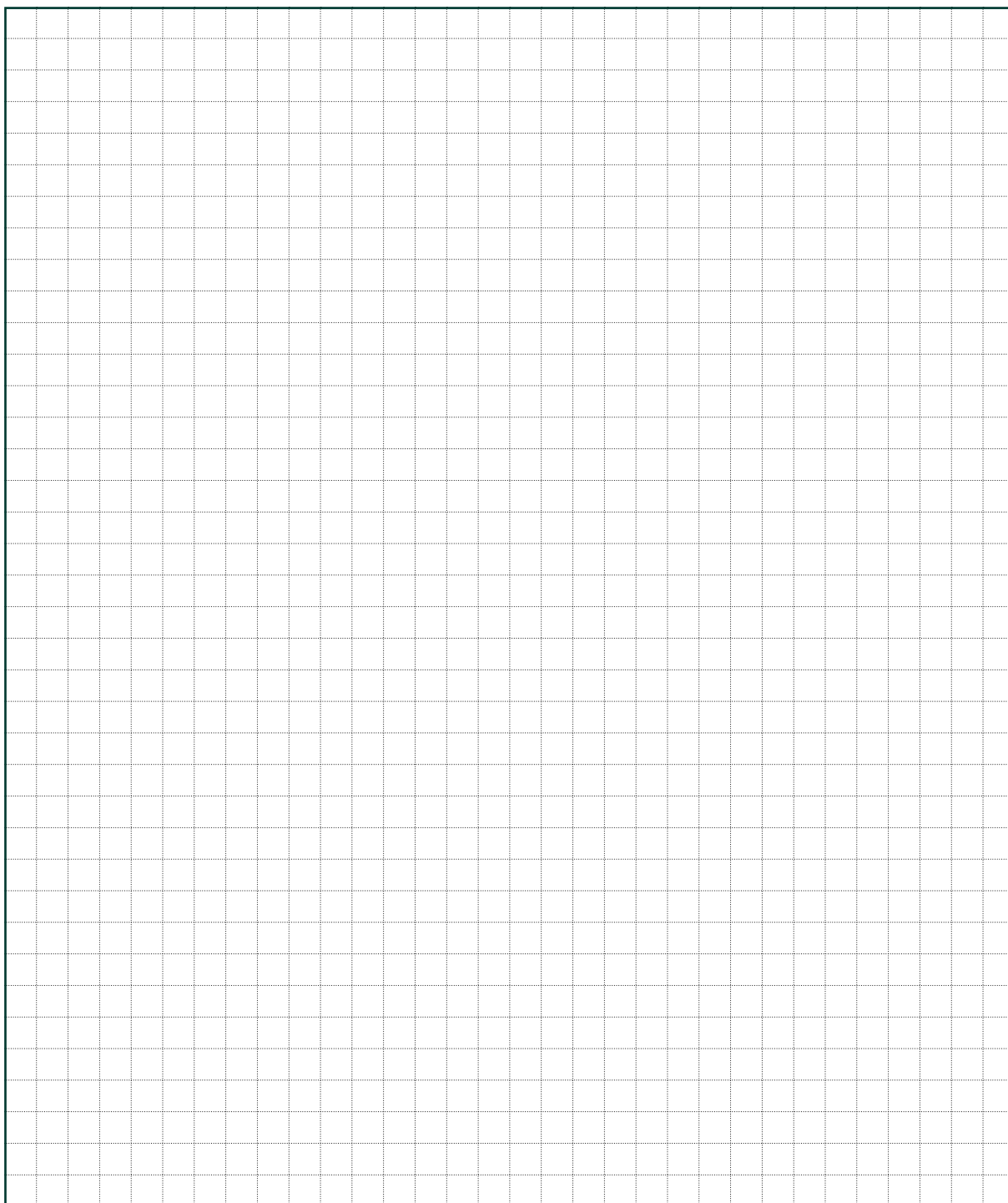
> On full black core board

Can be used as outer corner panel



Akoest-box-type

On request, we can deliver frames (colour-coordinated or otherwise) in veneer, HPL or solid timber on various depths and widths. Assembled or loose.



tripla 
coustics

YOUR SILENT PARTNER

PRINT 
ACOUSTICS

WOOD 
COUSTICS

BI 
COUSTICS

Triplacoustics is a TRIPLACO brand

Generaal Deprezstraat 2, 8530 Harelbeke - Belgium

T +32 56 22 62 17 | F +32 56 22 98 15 | info@triplacoustics.be | www.triplacoustics.be