

## type Ls m wall-ceiling



### MATERIAL COMPOSITION

**Top layer** Solid timber slats FJ Oak, FR Rubberwood or veneer MDF slats

**Core** Black Bicomponent acou PET sheet  $\pm 12\text{mm}$   
2400 gr/m<sup>2</sup> (European fire class core B)

**WEIGHT** 12 kg/m<sup>2</sup>

### STANDARD DIMENSIONS FULL PANEL

(half grooved long sides)  
3030x637x $\pm 30\text{ mm}$



### OPTIONS

Curved wall application

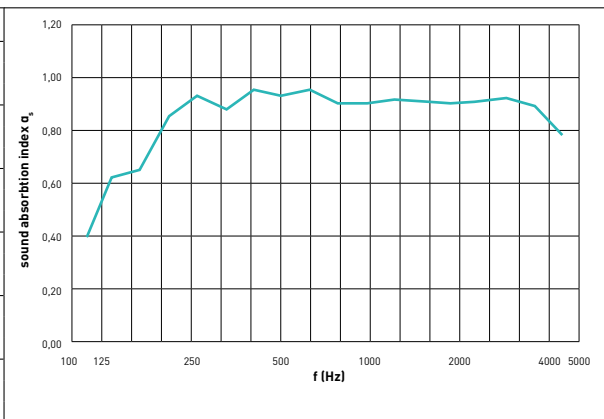
radius > 0,30m :  
Ls m Flex soft PET core:  
final thickness: 30mm

TEST SET-UP  
IN LABORATORY:

TOTAL THICKNESS  
WALLS  
100 mm



f(Hz)	$\alpha_s$
100	0,40
125	<b>0,63</b>
160	0,66
200	0,86
250	<b>0,94</b>
315	0,89
400	0,96
500	<b>0,94</b>
630	0,96
800	0,91
1000	<b>0,91</b>
1250	0,93
1600	0,92
2000	<b>0,91</b>
2500	0,92
3150	0,93
4000	<b>0,90</b>
5000	0,79

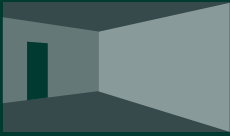


f(Hz)	$\alpha_p$
125	0,55
250	0,90
500	0,95
1000	0,90
2000	0,90
4000	0,85

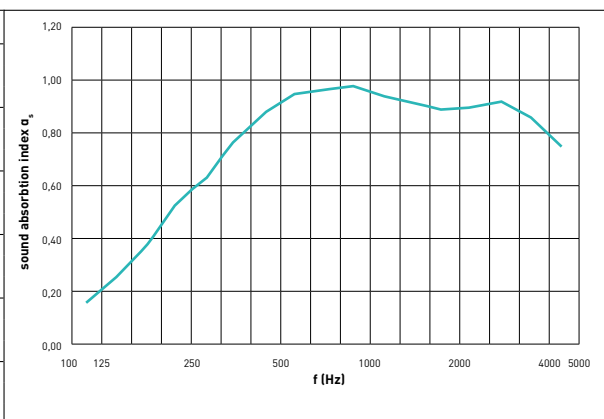
Totale Thickness	% perfo	$\alpha_w$	f(Hz)	Sound class	NRC	SAA
<b>100 mm</b>		<b>0,95</b>		A	0,90	0,92
<b>Installation</b>	Mounted on a wooden frame with a thickness of 70 mm, filled with 50 mm of mineral wool with a density of 40 kg/m <sup>3</sup> .					
Values according to reverberation room test EN ISO 354:2003 - EN ISO 11654:1997						

TEST SET-UP  
IN LABORATORY:

TOTAL THICKNESS  
WALLS  
50 mm



f(Hz)	$\alpha_s$
100	0,15
125	<b>0,20</b>
160	0,26
200	0,37
250	<b>0,53</b>
315	0,63
400	0,77
500	<b>0,88</b>
630	0,95
800	0,97
1000	<b>0,98</b>
1250	0,94
1600	0,92
2000	<b>0,89</b>
2500	0,90
3150	0,92
4000	<b>0,86</b>
5000	0,75



f(Hz)	$\alpha_p$
125	0,20
250	0,50
500	0,85
1000	0,95
2000	0,90
4000	0,85

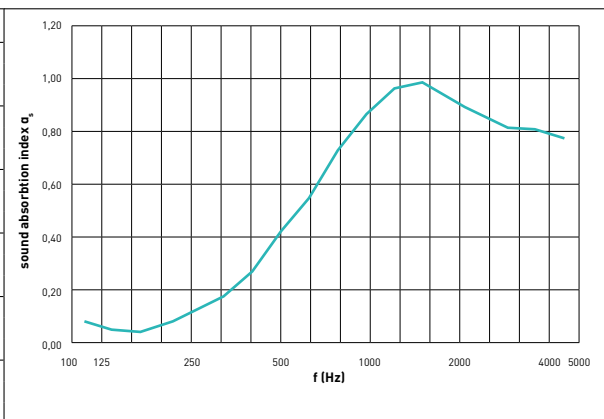
Totale Thickness	% perfo	$\alpha_w$	f(Hz)	Sound class	NRC	SAA
<b>50 mm</b>		<b>0,80</b>		B	0,80	0,81
<b>Installation</b>	Mounted on a wooden frame with a thickness of 20 mm, filled with 20 mm PRIMAWOOL of 22,5 kg/m <sup>3</sup> .					
Values according to reverberation room test EN ISO 354:2003 - EN ISO 11654:1997						

TEST SET-UP  
IN LABORATORY:

PRODUCT DIRECTLY  
MOUNTED ON WALL/  
CEILING



f(Hz)	$\alpha_s$
100	0,09
125	<b>0,06</b>
160	0,05
200	0,09
250	<b>0,14</b>
315	0,19
400	0,28
500	<b>0,43</b>
630	0,56
800	0,73
1000	<b>0,86</b>
1250	0,97
1600	0,99
2000	<b>0,93</b>
2500	0,87
3150	0,82
4000	<b>0,81</b>
5000	0,78



f(Hz)	$\alpha_p$
125	0,05
250	0,15
500	0,40
1000	0,85
2000	0,95
4000	0,80

Totale Thickness	% perfo	$\alpha_w$	f(Hz)	Sound class	NRC	SAA
<b>30 mm</b>		<b>0,40</b>		D	0,60	0,59
<b>Installation</b>	Acoustic panels mounted directly onto wall/ceiling without plenum					
Values according to reverberation room test EN ISO 354:2003 - EN ISO 11654:1997						

# installation full panels & planks

Fastening on single or double-spaced wooden battens (max 600 mm spacing) can be with underlying mounting laths (slant lath). These are screwed and/or glued to the back of the panels and the counter batten is fitted to the rear wall or on the framework.

Types Ms, Ns, Ls and Ls m can also be fixed by gluing at the back or by using a black screw at the front. Glueing can be done with an MS polymer adhesive sealant. First a primer is applied and then MS polymer.

The front side can also be mounted with black screws in case e.g. ceiling fixing / assured fixing is required. In the openings of the framework, a sound-absorbing sound-absorbing material (e.g. rock wool or Primawool) should be placed.

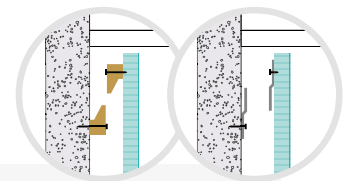
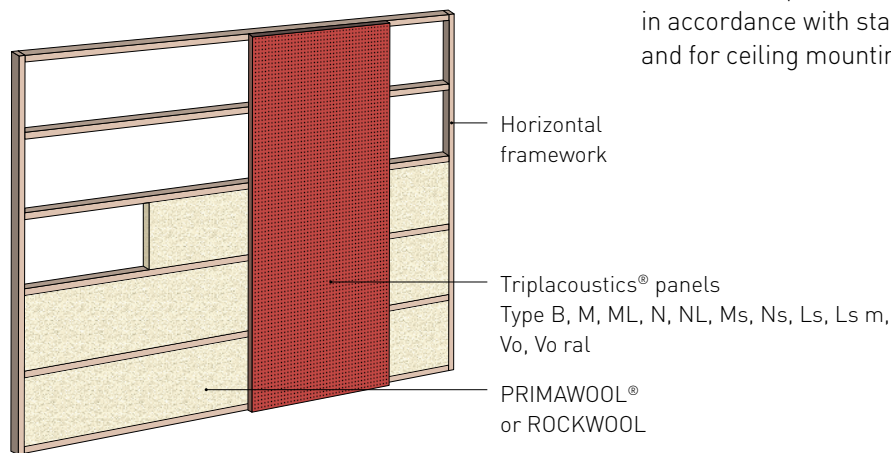
The 4 sides of the board must always be supported by the battens.

For impact-sensitive areas, we recommend longitudinal connections of 2 panels to an underlying common batten with 2 to 3 mm spacing.

End connections of 2 panels are mounted on a common underlying common battens with an intermediate joint of 2 to 3 mm. A space should be provided at the top between the panel and the ceiling to allow you to hook the panel into the slant lath.

We recommend working with a clearance of at least 1 mm per running metre to allow for possible expansion; and this over the total height and/or width of the wall.

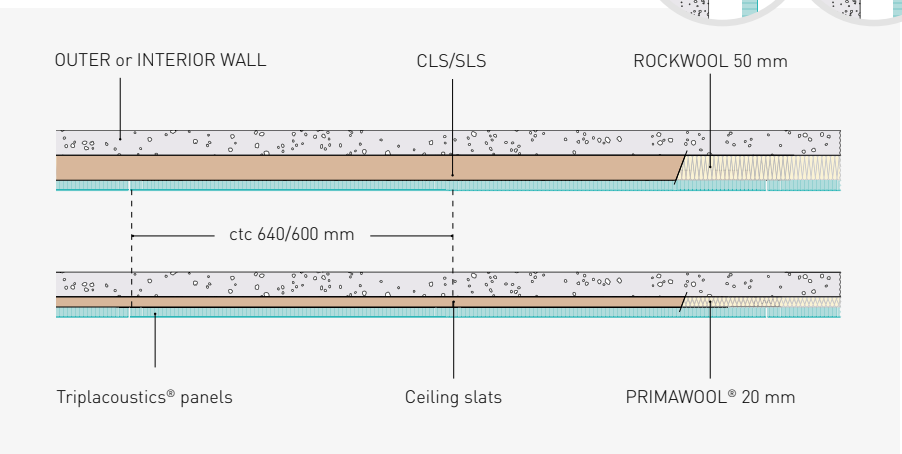
On request, you can receive specific installation instructions and certificates for: walls where increased impact is likely (sports halls venues, ...) in accordance with standard ETAG 003 & EN 13964 and for ceiling mounting.



TEST SET-UP  
IN LABORATORY:

**TOTAL THICKNESS WALLS**  
88/90 mm

**TOTAL THICKNESS WALLS**  
38/40 mm



## finishes



### solid timber slats

Solid timber slats fingerjointed in Oak or Rubberwood are glued on a PET acou panel.

Slat can be finished in RMC color oil or in transparent lacquer.

## storage and handling of finished panels

The acoustic panels/planks can be mounted horizontally and vertically. For conditioning, we recommend to store the panels in the room at least 48 hours before mounting them. These panels are by nature and composition only to be mounted in a well-conditioned room with a relative humidity between 35 and 55 % and a temperature between 14 and 30 °C. Large temperature and humidity differences between front and plenum are not allowed.

Flat storage with larger cover plate

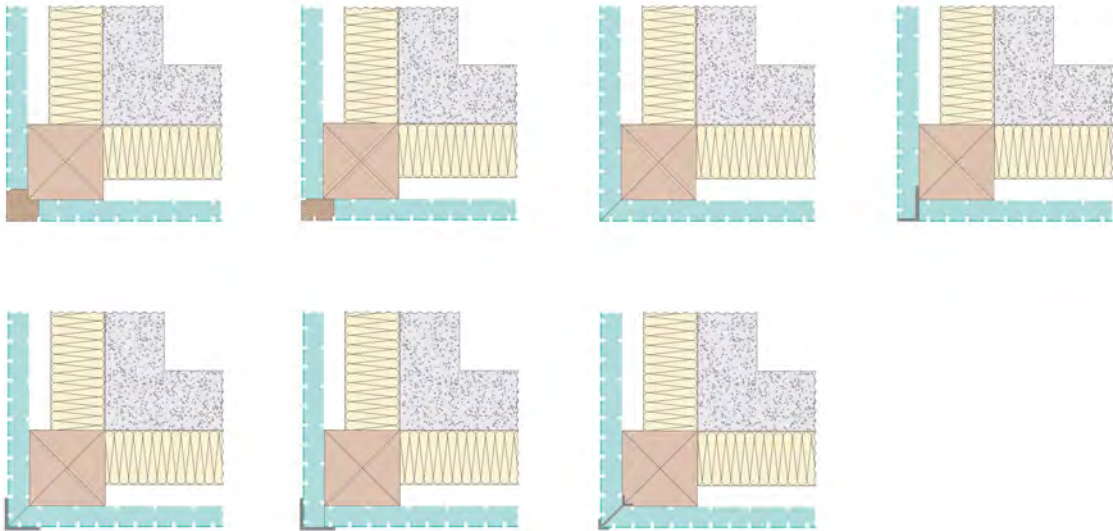
Handle with care (delicate panels)

Larger cover plate than the Triplacoustics® panels.

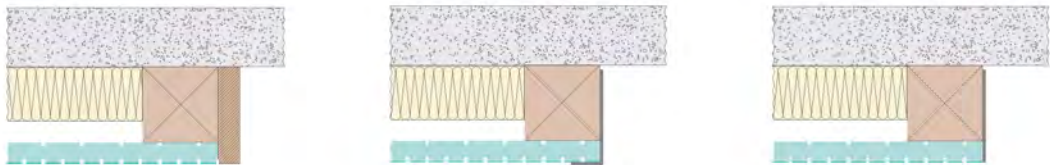


# inspiration corner + plinths

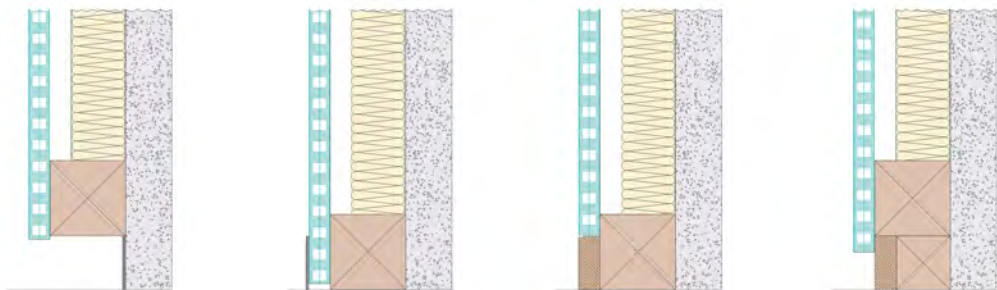
## Corner solutions



## Wall connections

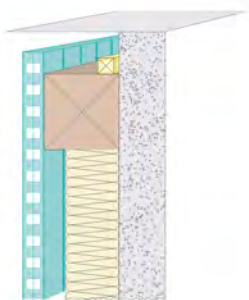









## Floor connections



\*

## Ceiling LED line

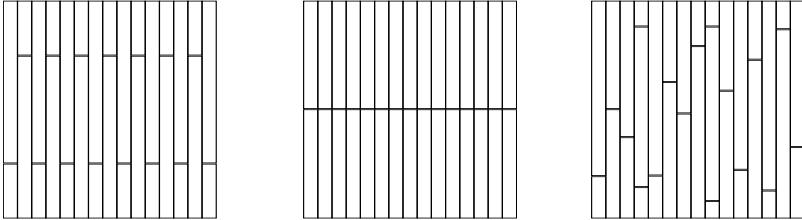


-  Primawool or rockwool
-  Triplacoustics panel
-  wooden structure
-  wall
-  profile available at specialist shop
-  decorative full panel material or massive wood
-  LED line

\* Required plinth position in case of type F or Ds

## installation patterns

There are different possible installation patterns for panels and planks.  
A couple of examples of patterns with planks are given in the drawings below.



## Primawool®

### Description

- > Low density absorber
- > 100% polyester fibre
- > 1-sided drum membrane: white
- > Colour of polyester fibre: white
- > Applications: walls, ceilings and baffle filling

### Features

- > 100 % recyclable PET
- > Inodorous
- > No emission of volatile organic compounds (VOCs) (A+ level)
- > Moisture and rot resistant
- > Non irritating for skin and eyes
- > European fire class B-s2-d0

### Figures

Density ISO 9073-1

Thickness E0 (without load) ISO 9073-2

Thickness E1 (load of 50g/50cm<sup>2</sup>)

Thickness E10 (load of 500g/500cm<sup>2</sup>)

Inflammability FMVSS 302

Dimensions of roll (length / width / width tolerances)

Package

450 gr/m<sup>2</sup>

22 mm (measured without package)

21 mm (measured without package)

13 mm (measured without package)

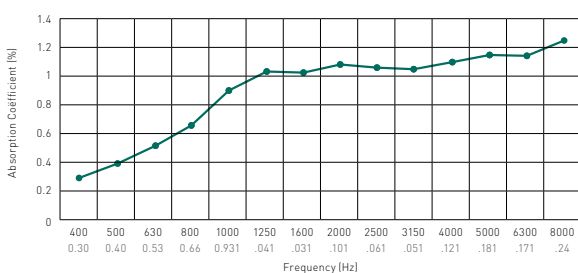
<100 mm/min (self-extinguishing)

30 m / 600 mm / -0 +2 cm

36 m<sup>2</sup> (2 separate rolls of 30 m)

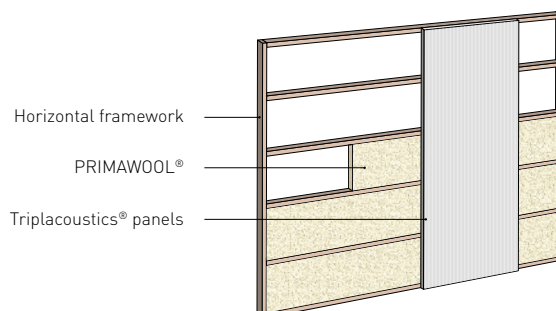
### Acoustic features

Absorption coefficient is determined by measuring a sample of PRIMAWOOL® in the reverberation room.

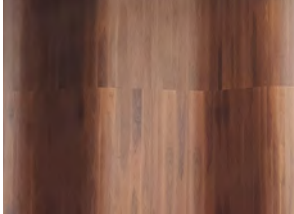


### Installation PRIMAWOOL®

Installation in a framework with vertical or horizontal slats.



## made-to-measure solutions



### Curved walls & ceilings

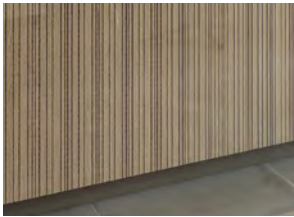
Our acoustic panels can be installed in various ways on a curved back structure. Which products and which radii are possible can be found in the overview in our catalog on pages 76 and 77.

catalog



### Akoest-object

You can also opt for acoustic baffles to absorb the sound in a room. These baffles are available as individual wall or ceiling elements. They can be made to measure on the basis of all our types.



### Akoest-lambris

All walls/ceilings are available in woodpanelling non acou on request  
> 0% Perforation (no absorption)  
> On full black core board  
Can be used as outer corner panel



### Akoest-box-type

On request, we can deliver frames (colour-coordinated or otherwise) in veneer, HPL or solid timber on various depths and widths. Assembled or loose.




## felt panels

Specific to Bicooustics range is that the Core consists of a black rigid acoustic PET sheet made of more than 50% Postconsumer recycled PET fibres.



These bicomponent fibres (soft melt jacket with hard long fibre Core), are hot-pressed into rigid acoustic boards measuring 3050 x 1300mm x ± 12mm.

These boards are light, stiff and absorb incident sound molecules very well and are therefore very suitable as core material for our acoustic panels. These boards have a fire reaction class B-s1-d0.



TYPE	NAME	TOP LAYER	DIMENSIONS (±mm)	ALPHA W 70 mm frame  50 mm Rockwool <b>wall- ceiling</b>	ALPHA W 20 mm frame  20 mm Primawool <b>wall- ceiling</b>	ALPHA W  Directly installed on the <b>wall- ceiling</b>	PAGINA IN CATALOGUS  
------	------	-----------	---------------------	--	---	--	---



## GROOVED

	Transversal core wide blade	HPL veneer	3030 x 640 x ±14 3030 x 592 x ±14	<b>0,95</b>  0,95* 0,95**	<b>0,70</b>  0,80* 0,78**	<b>0,25</b>  0,40* 0,43**	see page 86
	Transversal core Broad blade	HPL veneer	3030 x 640 x ±14 3030 x 576 x ±14	<b>0,85</b>  0,90* 0,95**	<b>0,80</b>  0,80* 0,78**	<b>0,35</b>  0,55* 0,53**	see page 88



## MICRO/NANO

	Micro	HPL veneer	3030 x 630 x ±14 3030 x 600 x ±14	<b>1,00</b>  0,95* 0,95**	<b>0,70</b>  0,80* 0,79**	<b>0,25</b>  0,40* 0,43**	see page 92
	Nano	HPL veneer	3030 x 630 x ±14 3030 x 600 x ±14	<b>0,95</b>  0,95* 0,94**	<b>0,70</b>  0,80* 0,79**	<b>0,30</b>  0,40* 0,44**	see page 94

## SLATS

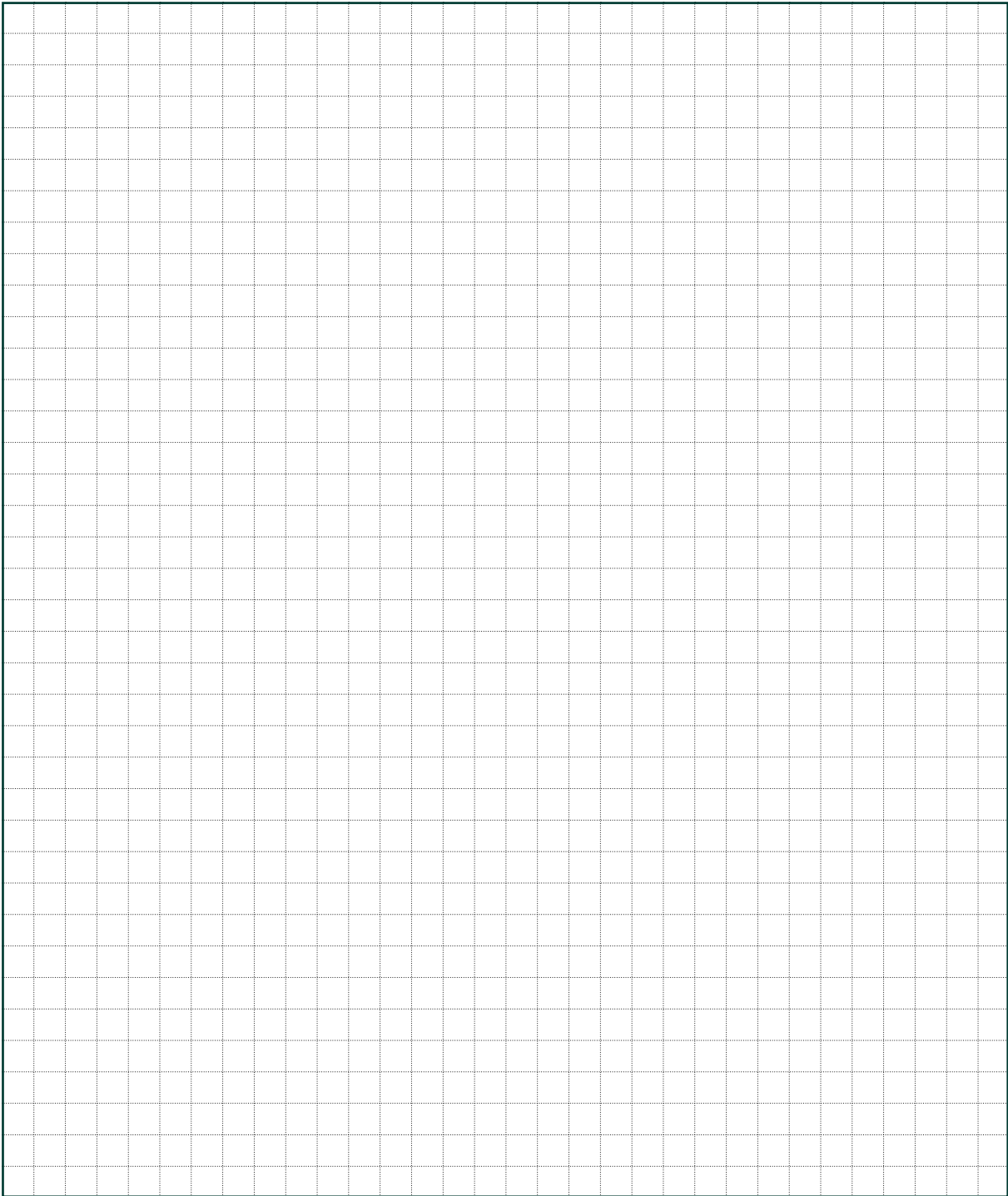
		HPL veneer	3030 x 624 x ±22	<b>0,95</b>  0,95* 0,93**	<b>0,80</b>  0,80* 0,80**	<b>0,35</b>  0,55* 0,56**	see page 98
		Oak-Rubberwood solid FJ	3030 x 637 x ±30	<b>0,95</b>  0,90* 0,92**	<b>0,80</b>  0,80* 0,81**	<b>0,40</b>  0,60* 0,59**	see page 100

## V MONO

			3030 x 640 x ±16	<b>0,95</b>  0,95* 0,93**	<b>0,70</b>  0,75* 0,74**	<b>0,30</b>  0,40* 0,40**	see page 104
		RAL / NCS	3030 x 640 x ±16	<b>0,95</b>  0,95* 0,93**	<b>0,70</b>  0,75* 0,75**	<b>0,30</b>  0,40* 0,40**	see page 106

\* NRC (Noise Reduction Coefficient): arithmetic average of measured sound absorption coefficient alphas at frequency levels of 250, 500, 1000 and 2000 Hz. \*\*

\*\* SAA (Sound Absorption Average): arithmetic average of measured sound absorption coefficient alphas at frequency levels of 200 up to 2500 Hz.



**tripla**   
**coustics**

YOUR SILENT PARTNER

PRINT   
ACOUSTICS

WOOD   
COUSTICS

BI   
COUSTICS

**Triplacoustics is a TRIPLACO brand**

Generaal Deprezstraat 2, 8530 Harelbeke - Belgium

T +32 56 22 62 17 | F +32 56 22 98 15 | [info@triplacoustics.be](mailto:info@triplacoustics.be) | [www.triplacoustics.be](http://www.triplacoustics.be)