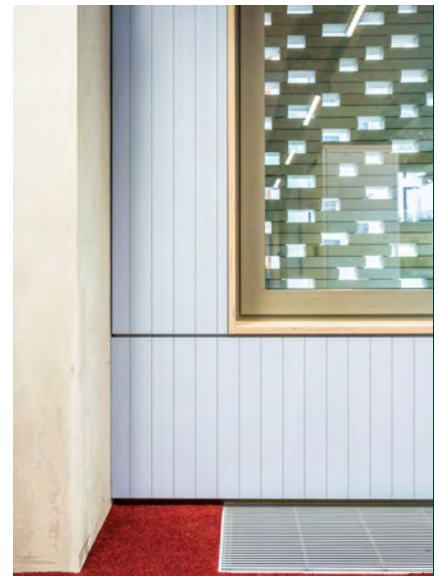


tripla coustics

YOUR SILENT PARTNER

TECHNICAL DATA SHEET

type ML Line wall-ceiling



MATERIAL COMPOSITION

- Top layer** High-quality HPL finish (EN438) or real wood veneer
- Core** Acoustic black moisture repellent MDF 16 mm
- Backing** Backing HPL finish (EN438) or backing veneer + acoustic absorbing glass fibre tissue (on the back)

WEIGHT 10 kg/m²

PERFORATION

Type ML LINE with top layer perforations of 10.6%, core perforations of 33.2%: provided with perforated top layer with micro perforations with a diameter of 1.1 mm across the entire surface area (linear, 3/3/1.1 mm) + central joint in combination with perforated acoustic core (with perforated zone in the core [linear, 8/8/6 mm]) and acoustic absorbing glass fibre tissue (back)

STANDARD MEASUREMENTS PLANKS

- (tongue-groove long sides)
- 3000x192x±18 mm (HPL)
- 3000x192x±17 mm (veneer)



OPTIONS

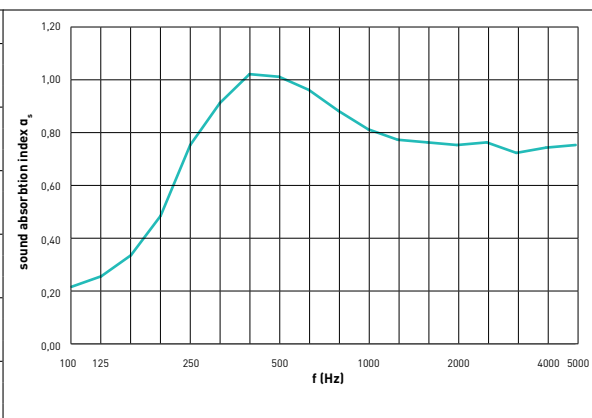
- Made-to-measure on request
- Cladding panel on request

TEST SET-UP IN LABORATORY:

TOTAL THICKNESS WALLS

88 mm

f(Hz)	T1 (s)	T2 (s)	α _s
100	12,09	7,06	0,22
125	10,69	6,12	0,26
160	9,17	5,00	0,34
200	8,59	4,03	0,49
250	9,01	3,20	0,76
315	9,18	2,83	0,92
400	8,81	2,57	1,03
500	9,07	2,61	1,02
630	9,83	2,79	0,97
800	9,89	2,97	0,89
1000	9,60	3,09	0,82
1250	8,80	3,12	0,78
1600	7,71	3,00	0,77
2000	6,63	2,83	0,76
2500	5,39	2,55	0,77
3150	4,24	2,31	0,73
4000	3,34	2,00	0,75
5000	2,54	1,67	0,76



f(Hz)	α _p
125	0,30
250	0,70
500	1,00
1000	0,85
2000	0,75
4000	0,75

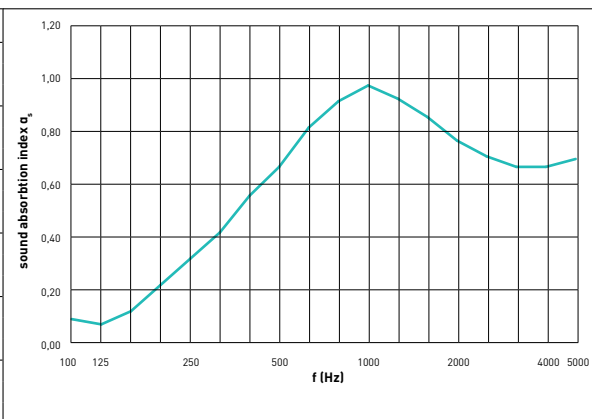
Total thickness	% perfo top layer	% perfo core	α _w	f(Hz)	Sound class	NRC	SAA
88 mm	10,6%	33,2%	0,85		B	0,85	0,83
Installation	Mounted on a wooden frame with a thickness of 70 mm, filled with 50 mm of mineral wool with a density of 40 kg/m ³ .						
Values according to reverberation room test EN ISO 354:2003 - EN ISO 11654:1997							

TEST SET-UP IN LABORATORY:

TOTAL THICKNESS WALLS

38 mm

f(Hz)	T1 (s)	T2 (s)	α _s
100	12,11	9,38	0,09
125	9,84	8,36	0,07
160	8,93	6,92	0,12
200	8,57	5,72	0,22
250	9,04	5,10	0,32
315	9,04	4,54	0,42
400	8,75	3,81	0,56
500	9,08	3,50	0,67
630	9,96	3,14	0,82
800	9,91	2,92	0,92
1000	9,68	2,77	0,98
1250	8,77	2,79	0,93
1600	7,57	2,81	0,86
2000	6,47	2,83	0,77
2500	5,16	2,67	0,71
3150	3,99	2,39	0,67
4000	3,10	2,07	0,67
5000	2,31	1,69	0,70



f(Hz)	α _p
125	0,10
250	0,30
500	0,70
1000	0,95
2000	0,80
4000	0,70

Total thickness	% perfo top layer	% perfo core	α _w	f(Hz)	Sound class	NRC	SAA
38 mm	10,6%	33,2%	0,60	M	C	0,70	0,68
Installation	Mounted on a wooden frame with a thickness of 20 mm, filled with 20 mm PRIMAWOOL of 22,5 kg/m ³ .						
Values according to reverberation room test EN ISO 354:2003 - EN ISO 11654:1997							

installation grooved / planks

Fastening on single wooden battens (preferably placed horizontally). Battens of 60x40 mm for Rockwool filling and 45x22mm for Primawool. Spacing of maximum 600mm is recommended.

Or fixing on double battens with primary vertical and secondary horizontal battens.

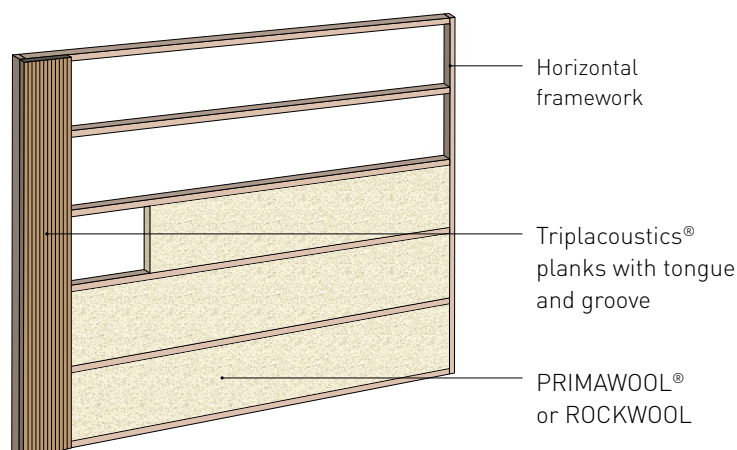
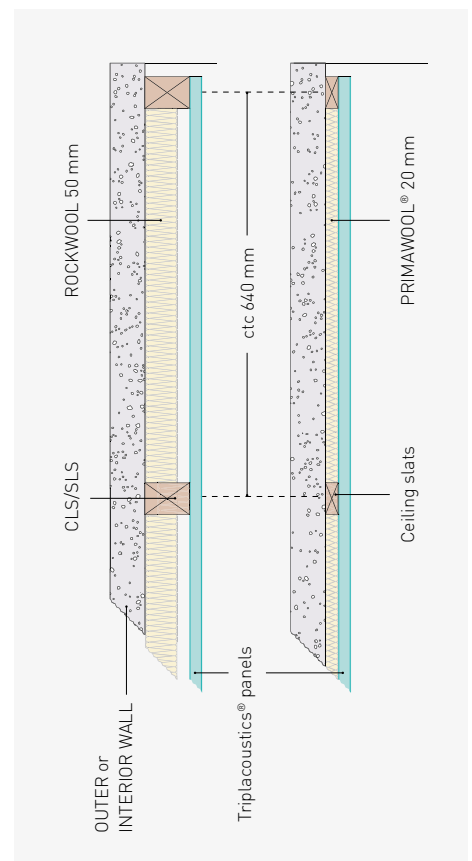
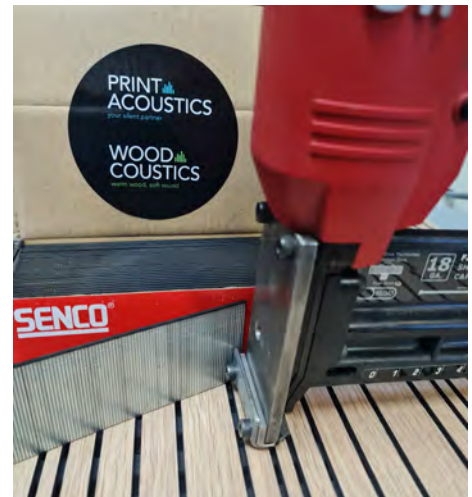
Fastening is done with pins/nails of type Triplacoustics impact-resistant black head RAL9005 in the grooves of the panel using a Triplacoustics mounting gun.

In the openings of the wooden framework should be filled with asound-absorbing material (e.g. rock wool or Primawool).

The 4 sides of the board should preferably be supported by the battens. At impact-sensitive areas, we recommend longitudinal joints of 2 boards on a on a common battens behind. End connections of 2 panels are mounted on a common underlying batten with an intermediate joint of 2 to 3 mm.

We recommend working with a clearance of at least 1 mm per running meter to allow for possible expansion; and this over the total height and/or width of the wall.

On request, you can receive specific installation regulations and certificates for walls where increased impact is likely (sports halls, party halls, ...) according to standard ETAG 003 & EN 13964.



TEST SET-UP IN LABORATORY:

TOTAL THICKNESS WALLS
88/90 mm

TOTAL THICKNESS WALLS
38/40 mm

finishes

HPL

The HPL high pressure laminates consist of layers of cellulose fibrous material combined with a decorative top layer impregnated with thermosetting resins and bonded together using a high pressure (9 Mpa = 90 kg/cm²), high temperature (150 ° C) process. All top layers are manufactured according to the European norm EN 438 I/II. The HPL top layer has a thickness of 0.9 mm and is therefore one of the highest-quality top layers on the market.

The complete technical details of HPL and the available colours and textures (more than 500 uni-colours and wood imitations) are available on request (by telephone or via e-mail).

You can also find information on www.triplacoustics.be.

STOCK HPL 2 BRANDS :

ABET LAMINATI

PFLEIDERER



digital print

We can print your image on our acoustic panels by means of digital printing on a HPL laminate sublayer. This is carried out with a four-colour printing process.

To have a good representation of your image, the digital file provided must have a minimum size of 150 dpi in CMYK on scale 1/1.

Only vertical application due to limited scratch resistance.

veneer

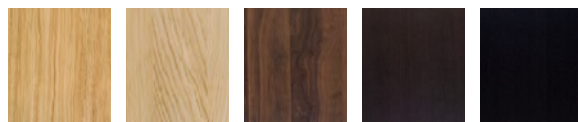
DECOSPAN

Our acoustic panels are also available with a top layer in real wood veneer (choices are plain cut oak, quarter cut oak, beech, birch, walnut, ash, etc.). The panels can be delivered untreated so that the interior designer can stain or varnish them, or we can deliver them finished. Finishing options include: UV varnish, matt varnish, stain, colour oil...



Shinnoki®

Shinnoki offers a wide choice of sturdy and high quality veneer products for architects and furniture makers to design and create stylish and distinctive interiors . Unlike standard veneered panels, Shinnoki products are ready-made for use and as easy to process as a melamine panel but with the same unique look and feel typical of real wood veneer.

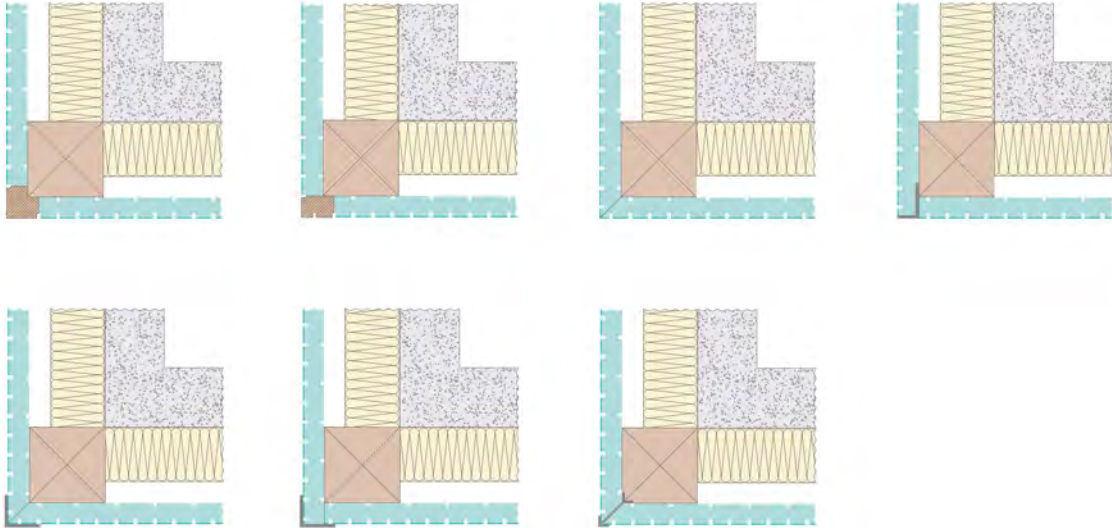


lacquer

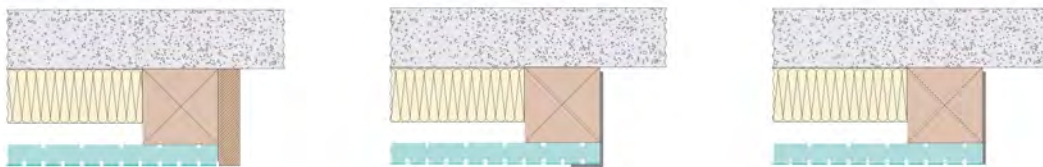
The grooved panels can be delivered in a RAL or NCS colour finished with transparent matt lacquer. This is done in-house at our production site. (the quality of the lacquer in the groove is less covering than the lacquer of the top layer).

inspiration corner + plinths

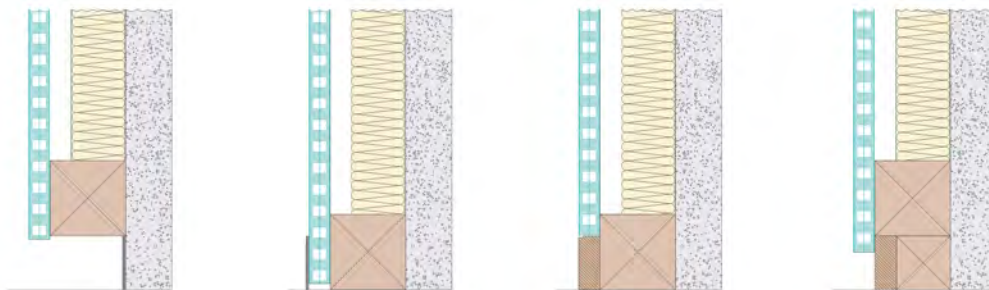
Corner solutions



Wall connections

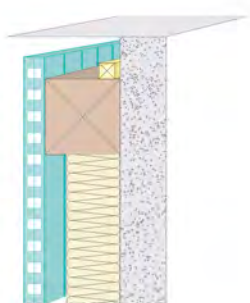









Floor connections



*

Ceiling LED line

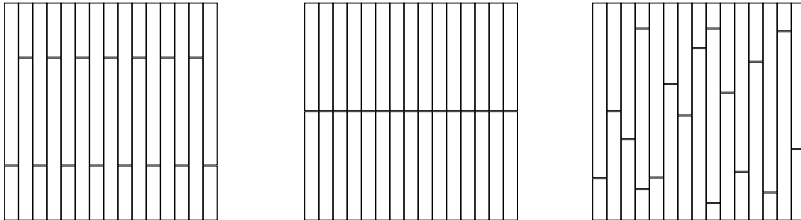


-  Primawool or rockwool
-  Triplacoustics panel
-  wooden structure
-  wall
-  profile available at specialist shop
-  decorative full panel material or massive wood
-  LED line

* Required plinth position in case of type F or Ds

installation patterns

There are different possible installation patterns for panels and planks. A couple of examples of patterns with planks are given in the drawings below.



Primawool®

Description

- > Low density absorber
- > 100% polyester fibre
- > 1-sided drum membrane: white
- > Colour of polyester fibre: white
- > Applications: walls, ceilings and baffle filling

Features

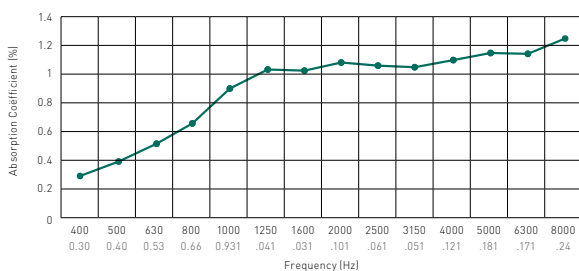
- > 100 % recyclable PET
- > Inodorous
- > No emission of volatile organic compounds (VOCs) (A+ level)
- > Moisture and rot resistant
- > Non irritating for skin and eyes
- > European fire class B-s2-d0

Figures

Density ISO 9073-1	450 gr/m ²
Thickness E0 (without load) ISO 9073-2	22 mm (measured without package)
Thickness E1 (load of 50g/50cm ²)	21 mm (measured without package)
Thickness E10 (load of 500g/500cm ²)	13 mm (measured without package)
Inflammability FMVSS 302	<100 mm/min (self-extinguishing)
Dimensions of roll (length / width / width tolerances)	30 m / 600 mm / -0 +2 cm
Package	36 m ² (2 separate rolls of 30 m)

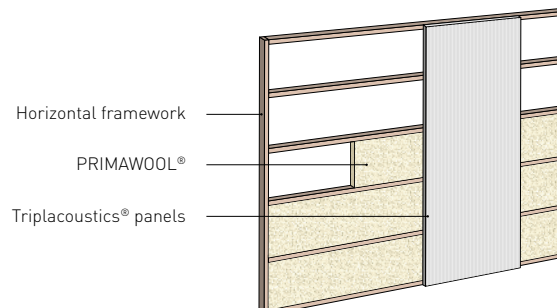
Acoustic features

Absorption coefficient is determined by measuring a sample of PRIMAWOOL® in the reverberation room.



Installation PRIMAWOOL®

Installation in a framework with vertical or horizontal slats.



made-to-measure solutions



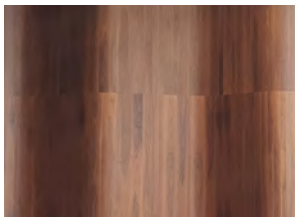
Acou Sliding door elements

Triplacoustics can produce Made To Measurement acoustic absorbing cupboard door elements with straight top-running and bottom guiding system. Both sides of the door elements are Type Db, Dr, Dw, I, M, N and the core has a full frame filled with Primawool.
Total Thickness $\pm 60\text{mm}$



Cladding panels for interior doors (non acou)

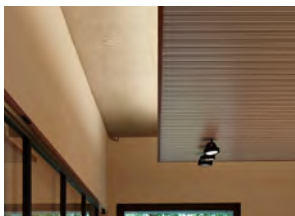
We can deliver 'false' acou panels for cladding of an interior door. This to preserve the esthetics of the project. These panels are delivered full oversize and are to be glued on an existing door.
extra thickness $\pm 11\text{mm}$



Curved walls & ceilings

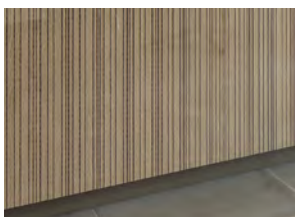
Our acoustic panels can be installed in various ways on a curved back structure. Which producten and which radii are possible can be found in the overview in our catalog on pages 76 and 77.

catalog



Akoest-object

You can also opt for acoustic baffles to absorb the sound in a room. These baffles are available as individual wall or ceiling elements. They can be made to measure on the basis of all our types.



Akoest-lambris

All walls/ceilings are available in woodpanelling non acou on request
> 0% Perforation (no absorption)
> On full black core board
Can be used as outer corner panel



Akoest-box-type

On request, we can deliver frames (colour-coordinated or otherwise) in veneer, HPL or solid timber on various depths and widths. Assembled or loose.

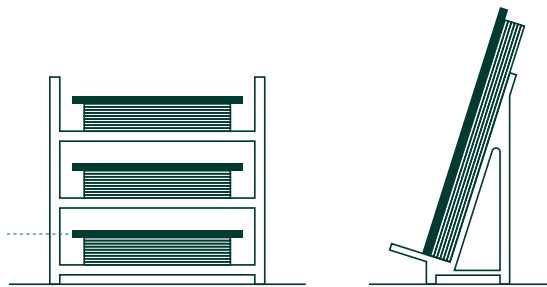
storage and handling of finished panels

The acoustic panels/planks can be mounted horizontally and vertically. For conditioning, we recommend to store the panels in the room at least 48 hours before mounting them. These panels are by nature and composition only to be mounted in a well-conditioned room with a relative humidity between 35 and 55 % and a temperature between 14 and 30 °C. Large temperature and humidity differences between front and plenum are not allowed.

Flat storage with larger cover plate

Handle with care (delicate panels)

Larger cover plate than the Triplacoustics® panels.



tripla
coustics

YOUR SILENT PARTNER

PRINT
ACOUSTICS

WOOD
COUSTICS

BI
COUSTICS

Triplacoustics is a TRIPLACO brand

Generaal Deprezstraat 2, 8530 Harelbeke - Belgium

T +32 56 22 62 17 | F +32 56 22 98 15 | info@triplacoustics.be | www.triplacoustics.be