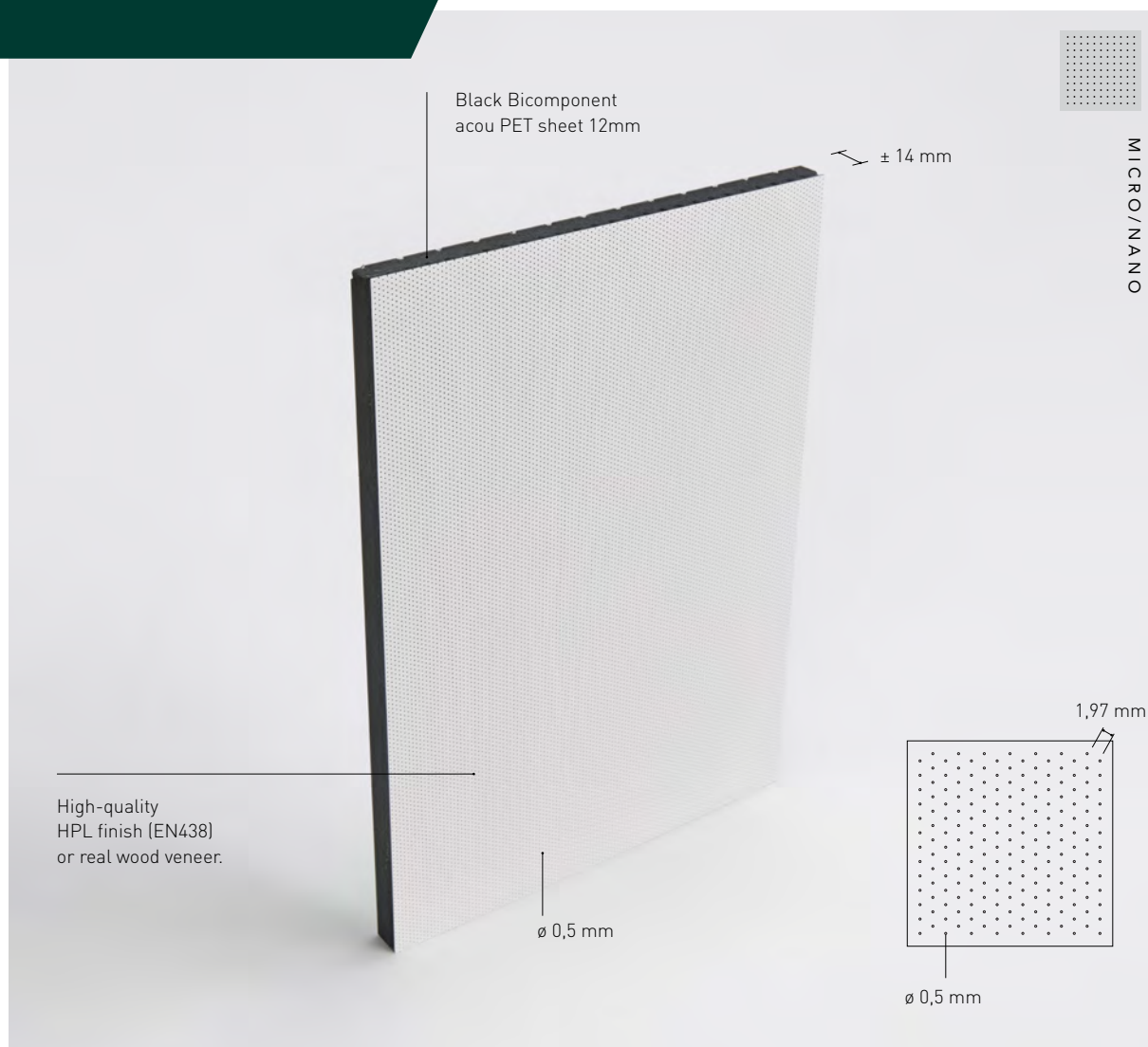


tripla coustics

YOUR SILENT PARTNER

TECHNICAL DATA SHEET

type Ns wall-ceiling



MATERIAL COMPOSITION

Top layer	High-quality HPL finish (EN438) or real wood veneer
Core	Black Bicomponent acou PET sheet 12mm
Backing	Backing HPL finish (EN438) of backing veneer

WEIGHT 4,5 kg/m²

PERFORATION

Type N with top layer perforations of 5.8%, core perforations of 44.2%: provided with perforated top layer and backing with nano perforations with a diameter of 0.5 mm across the entire surface area (diagonally, 1.97/1.97/0.5 mm)

STANDARD DIMENSIONS FULL PANEL

(square-sawn)
3000x630x±14 mm (HPL)
3000x600x±14 mm (veneer)

Core PET acou Panel ±12mm, 2400 gr/m²
(European fire class core B)

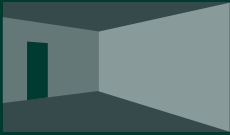
OPTIONS

Curved wall application radius > 0,30m :
Ns Flex soft PET core:
final thickness: 14mm

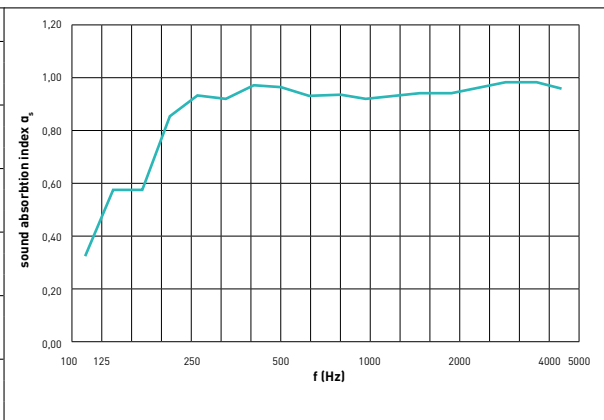


TEST SET-UP
IN LABORATORY:

**TOTAL THICKNESS
WALLS
84 mm**



f(Hz)	α_s
100	0,33
125	0,58
160	0,58
200	0,86
250	0,94
315	0,93
400	0,98
500	0,97
630	0,94
800	0,94
1000	0,93
1250	0,94
1600	0,95
2000	0,95
2500	0,97
3150	0,99
4000	0,99
5000	0,97

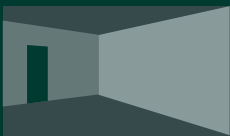


f(Hz)	α_p
125	0,50
250	0,90
500	0,95
1000	0,95
2000	0,95
4000	1,00

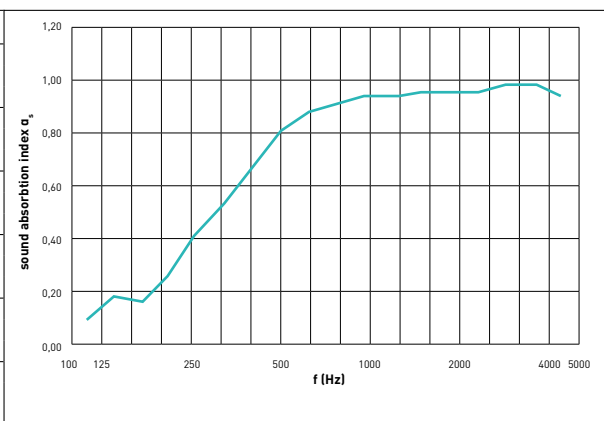
Totale Thickness	% perfo	α_w	f(Hz)	Sound class	NRC	SAA
84 mm		0,95		A	0,95	0,94
Installation	Mounted on a wooden frame with a thickness of 70 mm, filled with 50 mm of mineral wool with a density of 40 kg/m ³ .					
Values according to reverberation room test EN ISO 354:2003 - EN ISO 11654:1997						

TEST SET-UP
IN LABORATORY:

**TOTAL THICKNESS
WALLS
34 mm**



f(Hz)	α_s
100	0,10
125	0,19
160	0,17
200	0,28
250	0,44
315	0,55
400	0,70
500	0,82
630	0,89
800	0,92
1000	0,95
1250	0,95
1600	0,96
2000	0,96
2500	0,96
3150	0,99
4000	0,99
5000	0,95



f(Hz)	α_p
125	0,15
250	0,40
500	0,80
1000	0,95
2000	0,95
4000	1,00

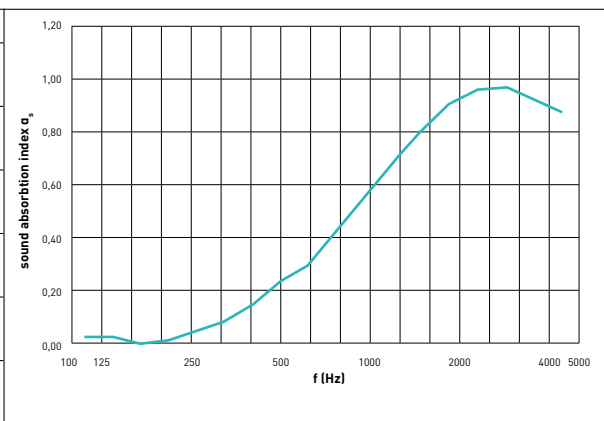
Totale Thickness	% perfo	α_w	f(Hz)	Sound class	NRC	SAA
34 mm		0,70		C	0,80	0,79
Installation	Mounted on a wooden frame with a thickness of 20 mm, filled with 20 mm PRIMAWOOL of 22,5 kg/m ³ .					
Values according to reverberation room test EN ISO 354:2003 - EN ISO 11654:1997						

TEST SET-UP
IN LABORATORY:

**PRODUCT DIRECTLY
MOUNTED ON WALL/
CEILING**



f(Hz)	α_s
100	0,03
125	0,03
160	0,01
200	0,02
250	0,06
315	0,09
400	0,15
500	0,24
630	0,30
800	0,43
1000	0,56
1250	0,69
1600	0,81
2000	0,91
2500	0,96
3150	0,97
4000	0,93
5000	0,88



f(Hz)	α_p
125	0,00
250	0,05
500	0,25
1000	0,55
2000	0,90
4000	0,95

Totale Thickness	% perfo	α_w	f(Hz)	Sound class	NRC	SAA
14 mm		0,30		D	0,40	0,44
Installation	Acoustic panels mounted directly onto wall/ceiling without plenum					
Values according to reverberation room test EN ISO 354:2003 - EN ISO 11654:1997						

installation drilled - micro-nano / full panel

Fastening on single or double-spaced wooden battens (max 600 mm spacing) can be with underlying mounting laths (slant lath). These are screwed and/or glued to the back of the panels and the counter batten is fitted to the rear wall or on the framework.

Types Ms, Ns, Ls and Ls m can also be fixed by gluing at the back or by using a black screw at the front. Glueing can be done with an MS polymer adhesive sealant. First a primer is applied and then MS polymer.

The front side can also be mounted with black screws in case e.g. ceiling fixing / assured fixing is required. In the openings of the framework, a sound-absorbing sound-absorbing material (e.g. rock wool or Primawool) should be placed.

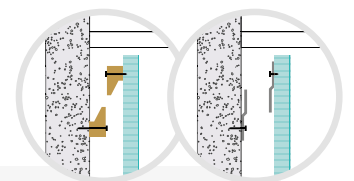
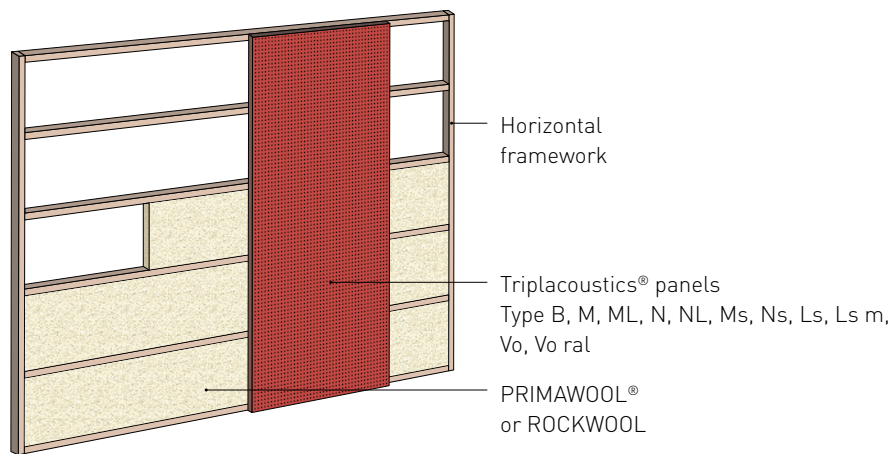
The 4 sides of the board must always be supported by the battens.

For impact-sensitive areas, we recommend longitudinal connections of 2 panels to an underlying common batten with 2 to 3 mm spacing.

End connections of 2 panels are mounted on a common underlying common battens with an intermediate joint of 2 to 3 mm. A space should be provided at the top between the panel and the ceiling to allow you to hook the panel into the slant lath.

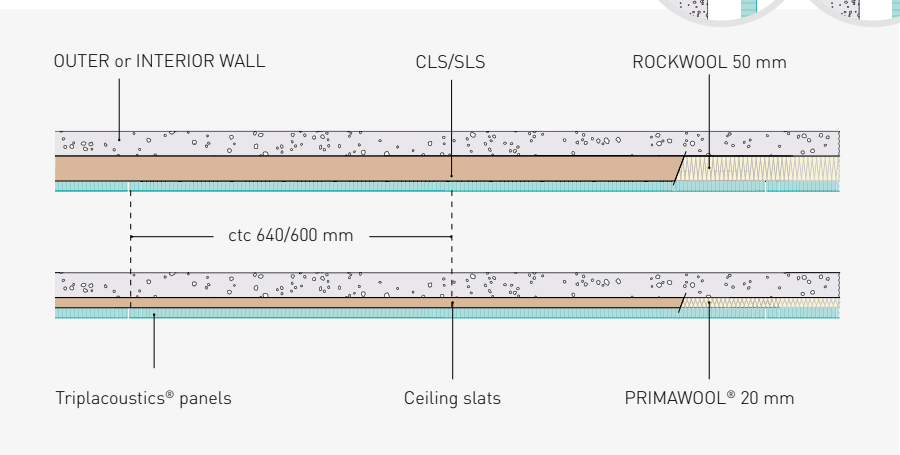
We recommend working with a clearance of at least 1 mm per running metre to allow for possible expansion; and this over the total height and/or width of the wall.

On request, you can receive specific installation instructions and certificates for: walls where increased impact is likely (sports halls venues, ...) in accordance with standard ETAG 003 & EN 13964 and for ceiling mounting.



TEST SET-UP
IN LABORATORY:
**TOTAL THICKNESS
WALLS**
88/90 mm

**TOTAL THICKNESS
WALLS**
38/40 mm



finishes

HPL

The HPL high pressure laminates consist of layers of cellulose fibrous material combined with a decorative top layer impregnated with thermosetting resins and bonded together using a high pressure (9 Mpa = 90 kg/cm²), high temperature (150 °C) process. All top layers are manufactured according to the European norm EN 438 I/II. The HPL top layer has a thickness of 0.9 mm and is therefore one of the highest-quality top layers on the market.

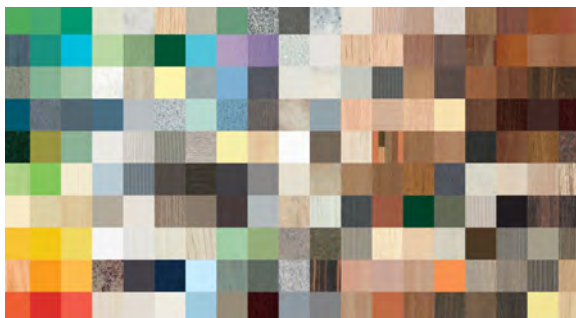
The complete technical details of HPL and the available colours and textures (more than 500 uni-colours and wood imitations) are available on request (by telephone or via e-mail).

You can also find information on www.triplacoustics.be.

STOCK HPL 2 BRANDS :

ABET LAMINATI

PFLEIDERER



digital print

We can print your image on our acoustic panels by means of digital printing on a HPL laminate sublayer. This is carried out with a four-colour printing process.

To have a good representation of your image, the digital file provided must have a minimum size of 150 dpi in CMYK on scale 1/1.

Only vertical application due to limited scratch resistance.

veneer

DECOSPAN

Our acoustic panels are also available with a top layer in real wood veneer (choices are plain cut oak, quarter cut oak, beech, birch, walnut, ash, etc.). The panels can be delivered untreated so that the interior designer can stain or varnish them, or we can deliver them finished. Finishing options include: UV varnish, matt varnish, stain, colour oil...



Shinnoki®

Shinnoki offers a wide choice of sturdy and high quality veneer products for architects and furniture makers to design and create stylish and distinctive interiors. Unlike standard veneered panels, Shinnoki products are ready-made for use and as easy to process as a melamine panel but with the same unique look and feel typical of real wood veneer.

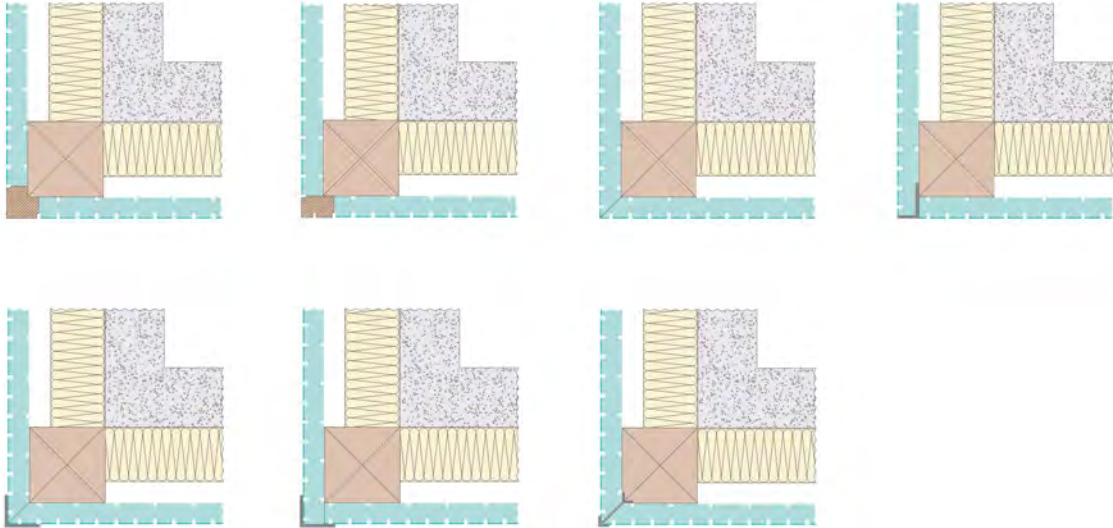


lacquer

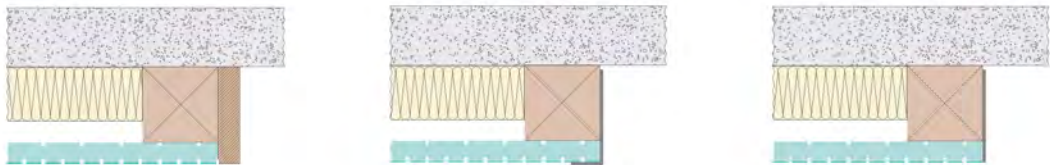
The grooved panels can be delivered in a RAL or NCS colour finished with transparent matt lacquer. This is done in-house at our production site. (the quality of the lacquer in the groove is less covering than the lacquer of the top layer).

inspiration corner + plinths

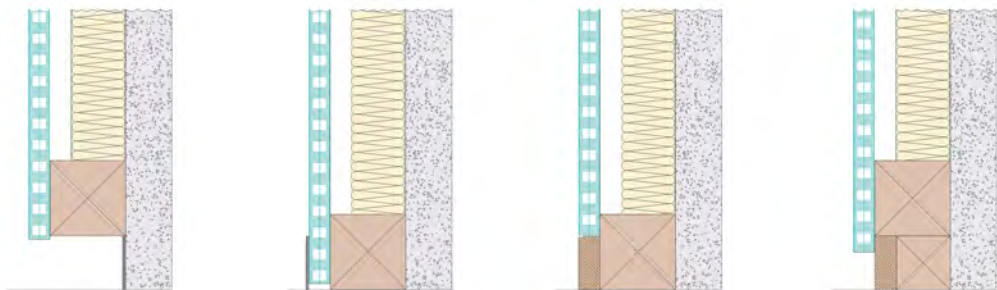
Corner solutions



Wall connections

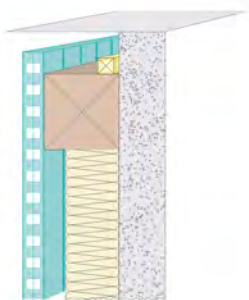









Floor connections



*

Ceiling LED line

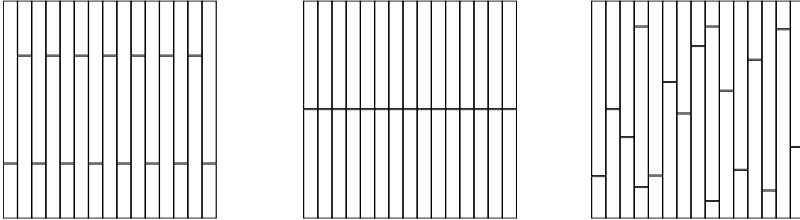


-  Primawool or rockwool
-  Triplacoustics panel
-  wooden structure
-  wall
-  profile available at specialist shop
-  decorative full panel material or massive wood
-  LED line

* Required plinth position in case of type F or Ds

installation patterns

There are different possible installation patterns for panels and planks.
A couple of examples of patterns with planks are given in the drawings below.



Primawool®

Description

- > Low density absorber
- > 100% polyester fibre
- > 1-sided drum membrane: white
- > Colour of polyester fibre: white
- > Applications: walls, ceilings and baffle filling

Features

- > 100 % recyclable PET
- > Inodorous
- > No emission of volatile organic compounds (VOCs) (A+ level)
- > Moisture and rot resistant
- > Non irritating for skin and eyes
- > European fire class B-s2-d0

Figures

Density ISO 9073-1

Thickness E0 (without load) ISO 9073-2

Thickness E1 (load of 50g/50cm²)

Thickness E10 (load of 500g/500cm²)

Inflammability FMVSS 302

Dimensions of roll (length / width / width tolerances)

Package

450 gr/m²

22 mm (measured without package)

21 mm (measured without package)

13 mm (measured without package)

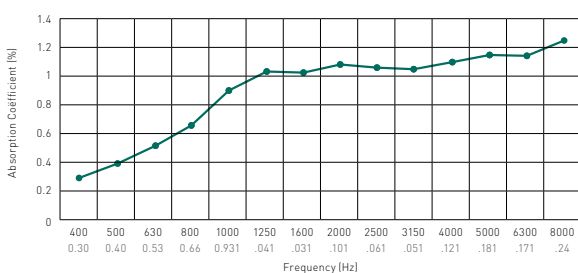
<100 mm/min (self-extinguishing)

30 m / 600 mm / -0 +2 cm

36 m² (2 separate rolls of 30 m)

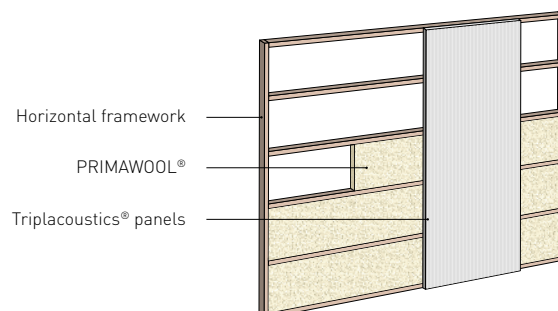
Acoustic features

Absorption coefficient is determined by measuring a sample of PRIMAWOOL® in the reverberation room.



Installation PRIMAWOOL®

Installation in a framework with vertical or horizontal slats.



made-to-measure solutions



Acou Sliding door elements

Triplacoustics can produce Made To Measurement acoustic absorbing cupboard door elements with straight top-running and bottom guiding system. Both sides of the door elements are Type Db, Dr, Dw, I, M, N and the core has a full frame filled with Primawool.

Total Thickness $\pm 60\text{mm}$

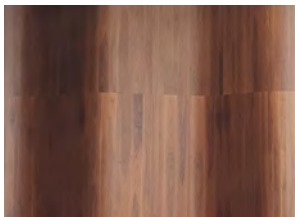


Cladding panels for interior doors (non acou)

We can deliver 'false' acou panels for cladding of an interior door.

This to preserve the esthetics of the project. These panels are delivered full oversize and are to be glued on an existing door.

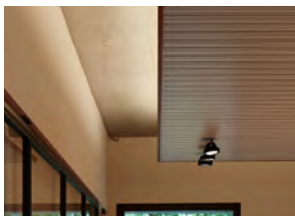
extra thickness $\pm 11\text{mm}$



Curved walls & ceilings

Our acoustic panels can be installed in various ways on a curved back structure. Which producten and which radii are possible can be found in the overview in our catalog on pages 76 and 77.

catalog



Akoest-object

You can also opt for acoustic baffles to absorb the sound in a room.

These baffles are available as individual wall or ceiling elements.

They can be made to measure on the basis of all our types.



Akoest-lambris

All walls/ceilings are available in woodpanelling non acou on request

> 0% Perforation (no absorption)

> On full black core board

Can be used as outer corner panel



Akoest-box-type

On request, we can deliver frames (colour-coordinated or otherwise) in veneer, HPL or solid timber on various depths and widths. Assembled or loose.



felt panels


Specific to Bicooustics range is that the Core consists of a black rigid acoustic PET sheet made of more than 50% Postconsumer recycled PET fibres.

These bicomponent fibres (soft melt jacket with hard long fibre Core), are hot-pressed into rigid acoustic boards measuring 3050 x 1300mm x \pm 12mm.



These boards are light, stiff and absorb incident sound molecules very well and are therefore very suitable as core material for our acoustic panels.

These boards have a fire reaction class B-s1-d0.



TYPE	NAME	TOP LAYER	DIMENSIONS (±mm)	ALPHA W 70 mm frame 50 mm Rockwool wall- ceiling	ALPHA W 20 mm frame 20 mm Primawool wall- ceiling	ALPHA W Directly installed on the wall- ceiling	PAGINA IN CATALOGUS 
------	------	-----------	---------------------	--	---	--	---



GROOVED

	Transversal core wide blade	HPL veneer	3030 x 640 x ±14 3030 x 592 x ±14	0,95 0,95* 0,95**	0,70 0,80* 0,78**	0,25 0,40* 0,43**	see page 86
	Transversal core Broad blade	HPL veneer	3030 x 640 x ±14 3030 x 576 x ±14	0,85 0,90* 0,95**	0,80 0,80* 0,78**	0,35 0,55* 0,53**	see page 88



MICRO/NANO

	Micro	HPL veneer	3030 x 630 x ±14 3030 x 600 x ±14	1,00 0,95* 0,95**	0,70 0,80* 0,79**	0,25 0,40* 0,43**	see page 92
	Nano	HPL veneer	3030 x 630 x ±14 3030 x 600 x ±14	0,95 0,95* 0,94**	0,70 0,80* 0,79**	0,30 0,40* 0,44**	see page 94

SLATS

		HPL veneer	3030 x 624 x ±22	0,95 0,95* 0,93**	0,80 0,80* 0,80**	0,35 0,55* 0,56**	see page 98
		Oak-Rubberwood solid FJ	3030 x 637 x ±30	0,95 0,90* 0,92**	0,80 0,80* 0,81**	0,40 0,60* 0,59**	see page 100

V MONO

			3030 x 640 x ±16	0,95 0,95* 0,93**	0,70 0,75* 0,74**	0,30 0,40* 0,40**	see page 104
		RAL / NCS	3030 x 640 x ±16	0,95 0,95* 0,93**	0,70 0,75* 0,75**	0,30 0,40* 0,40**	see page 106

* NRC (Noise Reduction Coefficient): arithmetic average of measured sound absorption coefficient alphas at frequency levels of 250, 500, 1000 and 2000 Hz. **

** SAA (Sound Absorption Average): arithmetic average of measured sound absorption coefficient alphas at frequency levels of 200 up to 2500 Hz.

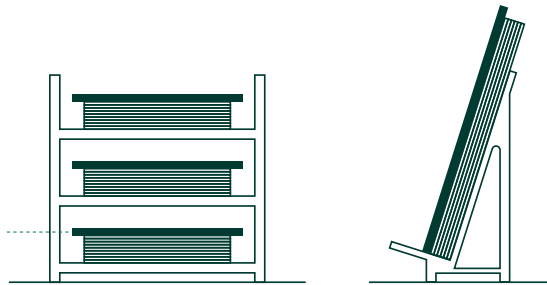
storage and handling of finished panels

The acoustic panels/planks can be mounted horizontally and vertically. For conditioning, we recommend to store the panels in the room at least 48 hours before mounting them. These panels are by nature and composition only to be mounted in a well-conditioned room with a relative humidity between 35 and 55 % and a temperature between 14 and 30 °C. Large temperature and humidity differences between front and plenum are not allowed.

Flat storage with larger cover plate

Handle with care (delicate panels)

Larger cover plate than the Triplacoustics® panels.



tripla
coustics

YOUR SILENT PARTNER

PRINT
ACOUSTICS

WOOD
COUSTICS

BI
COUSTICS

Triplacoustics is a TRIPLACO brand

Generaal Deprezstraat 2, 8530 Harelbeke - Belgium

T +32 56 22 62 17 | F +32 56 22 98 15 | info@triplacoustics.be | www.triplacoustics.be